



Updating Firmware on the Resoundant Active Driver

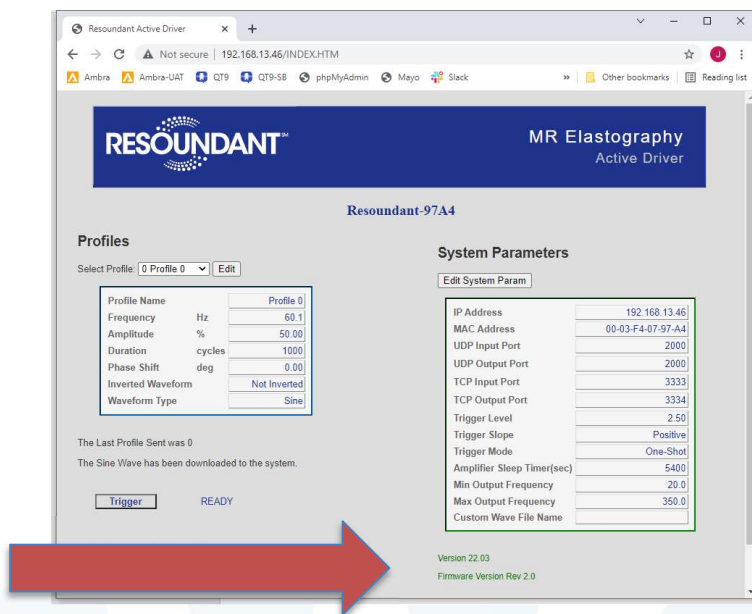
Purpose: Resoundant provides updates to the embedded software (firmware) for its devices, for the purposes of cybersecurity, compatibility, and features within its indications for use.

The update process takes less than 10 minutes and can be performed by a person of moderate computer skill.

The current version of the firmware can be seen on the active driver's internal webpage, in the lower-right corner.

The "Version" number is what will be updated in this procedure.

The "Firmware version number" or "RTU version" is not affected by this update.





Supported and unsupported update paths:

| Support Upgrade paths | Notes |
|---|--|
| V20.00 to any V22.xx | Fully supported |
| V22.xx -> V22.yy, where yy > xx | Supported ¹ : for example, v22.03 -> 22.04 |
| | |
| Unsupported paths | WARNING: An unsupported path may cause the device to malfunction or cease to operate. This cannot be corrected in the field and would require the unit to be returned to Resoundant for repair or replacement. There is nothing preventing attempt of an update! |
| NOT SUPPORTED: downgrade V22.yy -> V22.xx, where yy > xx | Downgrading to any previous version is not supported. |
| NOT SUPPORTED: V9.00 -> any | Updates from V9.00 or V10.00 are not supported. |
| NOT SUPPORTED: V10.00 -> any | |

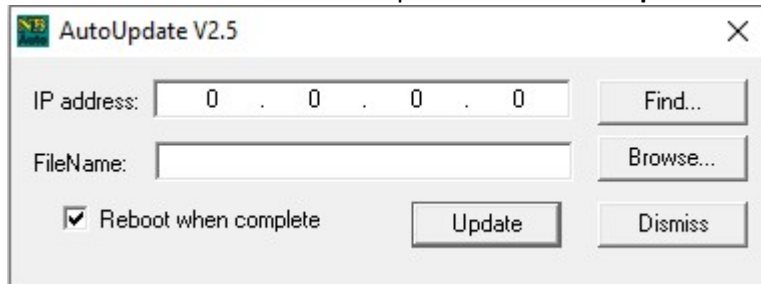
1. Updates are cumulative, so any v22.xx can be upgraded to v22.yy (yy > xx) in a single step. For example, directly updating v20.00 -> v22.04 is supported. It is not necessary for intermediate upgrade steps.

Prerequisites:

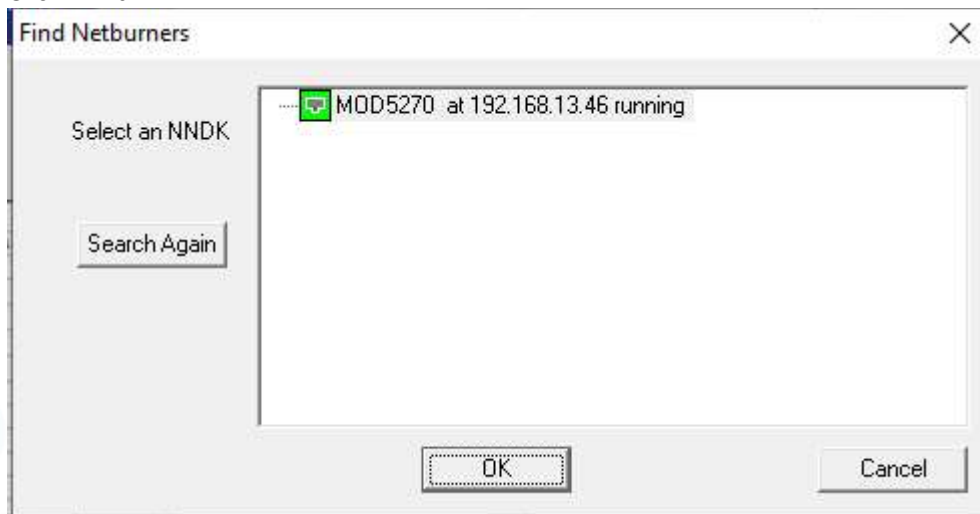
- A Windows 10 or 11 computer, laptop preferred.
- Ethernet cable, to connect windows computer directly to the Active Driver
- Download the update tool: <https://www.netburner.com/download/autoupdate-windows/> and unzip.
- Download firmware: <https://www.resoundant.com/firmware>

Update instructions:

- 1) Connect active driver to the computer and run **autoupdate.exe**.



- 2) Click "Find..."



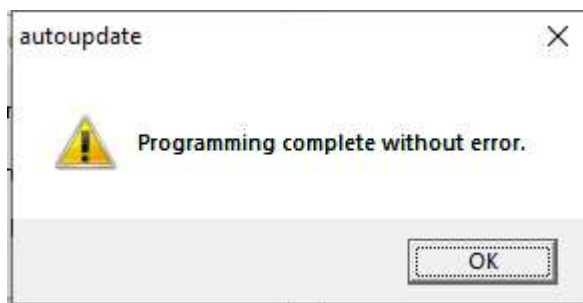
If a "MOD5270" entry appears, as shown here NOTE THE IP ADDRESS FOR THE NEXT STEP, then select it and click OK, and proceed to next step.

If no entry is found, click cancel. Launch Windows "Network Connections" (Start > type "Network Connection") and disable all internet devices *except* the ethernet device used to connect to the active driver. Now click Autoupdate > Find again.

- 3) Click Browse, select the firmware update file downloaded in prerequisites.

The computer must have route-access to the active driver for update to complete. The simplest way to achieve this is to set the IP address of the computer's ethernet adapter to a static value on the same subnet as the active driver.

- 4) In the autoupdate dialog, Click Update. In less than 10 seconds, a success message will appear.



- 5) Close this window. Power off the active driver for 10 seconds, and power back on.
- 6) Confirm the update by observing the revision on the main webpage matched the version applied.

Validation status:

| Vendor | Recommended/ Validated version | Notes |
|----------------|-----------------------------------|------------------------------|
| Canon | 22.05 | v22.04 may timeout on wakeup |
| GE | 22.04 | TPS restart after update |
| Philips | 22.04 | |
| Siemens | 22.04 | |
| United Imaging | 22.04 | |

**Phantom scan:**

To ensure overall function, perform a phantom scan according to:

<https://www.resoundant.com/phantom-guide>

Activation:

New active drivers should be registered at <https://activation.resoundant.com> and activated.

Active Drivers that have been previously registered and activated do not require re-activation after update. This can be verified: active driver webpage will display current activation status ("Standard", "Unlocked", "Locked")

For assistance:

Email: software-support@resoundant.com