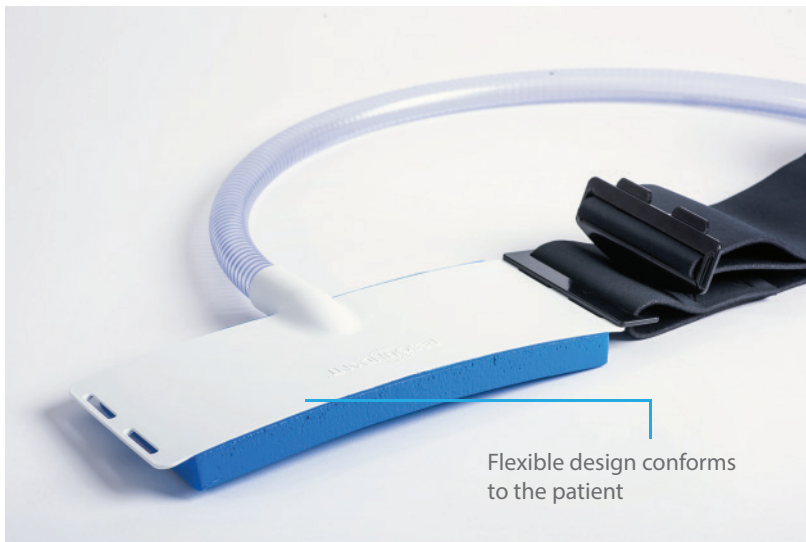


Flex Passive Drivers

Comfort through flexibility for MRE exams

Flex Passive Driver



Flex Passive Driver, Small



**Flex Passive Drivers are accessories to the MR Elastography system*

Introducing the Flex Passive Drivers for Magnetic Resonance Elastography (MRE) exams.

The Flex Passive Drivers from Resoundant introduce a superior level of patient comfort for MRE exams. Both flex drivers conform naturally around the patient and are secured in place with an adjustable belt assembly for a custom fit every time. The result provides an enhanced patient experience, greater comfort, and easier patient setup.

- Available in Large and Small sizes
- Forms comfortably around patient's abdomen
- Tightens easily with integrated belt
- Stays in place for excellent wave transfer
- Reduces failed exam rate

Available directly from MRI scanner manufacturers

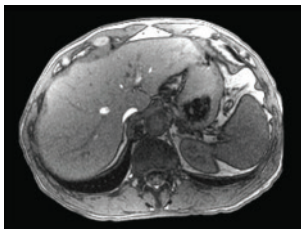
The gold standard in liver imaging

MR Elastography is a combination of software and hardware that uses sound waves to measure liver stiffness. MR Elastography, was invented at Mayo Clinic (Rochester, MN USA) and has been FDA-cleared since 2009.

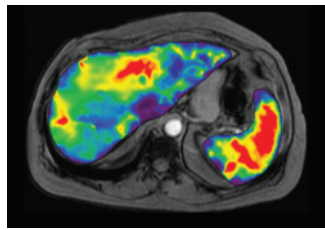
MR Elastography has emerged as a well-validated alternative to liver biopsy for staging liver fibrosis and is used in routine clinical care. MRE is currently recognized by the American Gastroenterological Association, the American Association for the Study of Liver Diseases, and the American College of Radiologists as the recommended exam for assessing and staging of liver fibrosis.

MR Elastography:

- Patient friendly with 4 x 8 second scans
- Non-contrast, non-invasive
- Recommended in referrer clinical guidelines
- Category I CPT® code (76391)



Traditional liver MRI



MRE showing areas of elevated liver stiffness (red)

Flex Driver pricing is set by each MRI scanner manufacturer

RoHS and REACH compliant, CE Class 1 device to be used exclusively with Resoundant hardware

